

PART-TIME MBA IN BUSINESS INNOVATION

(Berlin or Munich)



KEY FACTS



MBA DEGREE

Triple accredited
globally-recognized



BLENDED DELIVERY

75% online
25% in person



14 RESIDENCIES OVER 2 YEARS

2.5 days Thurs–Sat



FOCUSED ON

Technology
and Innovation



ENGLISH LANGUAGE

International
cohort



WORLD'S MOST

innovative
learning platform



IN-PERSON

Career support



AVAILABLE IN

Berlin or Munich

GERMANY'S FIRST TRIPLE ACCREDITED PART-TIME BLENDED MBA

ESMT's part-time MBA has been specifically designed to bring success in a rapidly changing world. Whether you are part of a mature corporation needing to stimulate disruptive innovation, or a start-up looking to scale up, this program will help you achieve the next phase of your personal and professional development.

Blended learning combines the best of online and face-to-face. You benefit from the flexibility of interactive online learning AND learn from peers and world-class faculty

during the in-person modules. Every single course in the program integrates face-to-face and online learning.

ESMT Berlin is ranked by the Financial Times as the #1 business school in Germany, for three consecutive years and #7 in Europe. Our international focus means you join a school with Germany's most international alumni network in over 40 countries. ESMT Berlin is the first German business school to launch a triple-accredited blended MBA program.



WELCOME TO THE ESMT BERLIN PART-TIME MBA PROGRAM!

Choosing how to study for your MBA usually involves trade-offs. With the ESMT part-time MBA, you can turn **OR** into **AND**:

- ✓ Keep your current job **AND** develop a deeper, more holistic view on management and leadership
- ✓ Study at your own pace **AND** connect with new and interesting people in-person
- ✓ Experience the breadth of an MBA program **AND** focus on business innovation, and digital business
- ✓ Learn from a world-class faculty **AND** trade experiences with like-minded professionals and managers
- ✓ Join an international program (classmates, faculty, content) **AND** be rooted in Germany

The ESMT Part-time MBA is a comprehensive two-year program that has been designed for people just like you. It combines the best of both worlds so choose **AND** and get ready for the ride!

I very much look forward to supporting you during your journey.



Urs Mueller
Faculty Lead
Part-time MBA in Business Innovation



“I specifically wanted a program that allowed me to combine studying with my full-time work schedule and also offer amazing networking opportunities with fellow students. The blended format of the part-time MBA is a perfect fit for me!”

Lioba Lawrenz
Part-Time MBA Student
Class of 2020-2022
Strategic Senior Project Manager IT
at Otto Group



“The ESMT Berlin Part-time MBA program is specifically designed for individuals like me who want to maintain work-life balance while investing in self-development. I want to enhance my career and gain knowledge in management and entrepreneurship. As a mother, founder of a coffee startup – FreshBean – and software developer, my days are full! Time management, discipline, solving problems one at a time and a good cup of coffee are my keys to success.”

Anastasiia Miroshnichenko
Part-Time MBA Student
Class of 2020-2022
Software Developer, Founder of coffee start up
FreshBean and Mother

PROGRAM STRENGTHS

The part-time MBA is an ideal way to continue working full-time while earning a globally-recognized MBA. Accelerate your career, enhance your expertise, and build your network all in one program.

INNOVATION IN THE AGE OF DIGITAL COMPETITION

The ESMT Berlin part-time MBA in Business Innovation will help you gain the knowledge and competencies to support both your personal development, and the growth and transformation of your company.

In addition to learning about essential MBA topics, you will take part in courses specifically designed to address challenges such as customer centricity, entrepreneurial strategy and innovation, digital business, and agile leadership.

INTERNATIONAL STUDY OPTION

In March of your second year, you can take part in a week-long international study module at one of our partner schools in the [Global Network for Advanced Management \(GNAM\)](#). While the courses available change annually, previous Network Weeks have included electives such as Behavioral Science of Management (Yale School of Management), *Open Innovation and Entrepreneurship* (Technion – Israel Institute of Technology), *Sustainable Development, moving from Concept to Strategy* (INCAE), *Innovation X Service Management – Omotenashi 3.0* (Hitotsubashi), and many more.

Credits earned during the GNAM Network Week can be used to substitute for other ESMT courses. Note that as places on international modules are limited, availability is not guaranteed for all participants.

MINIMAL TIME AWAY FROM THE OFFICE AND FAMILY

The integrated approach at the heart of the two-year blended program reduces the time you need to spend away from your organization. You'll also be delivering value to the business from the start as you apply what you've learned.

75% of the program is completed online giving you the flexibility to make the program fit around your busy schedule and family commitments.

For the remaining 25%, you will join the class in Berlin or Munich for 14 in-person residencies. Running from Thursday afternoon through to Saturday evening, the residency schedule means you only need spend 28 days away from the office over two years.

BENEFITS FOR YOU AND YOUR EMPLOYER

Studying in the ESMT part-time MBA will deliver benefits to you AND your employer.

HOW YOU BENEFIT

- ✓ You can accelerate your career while you study
- ✓ You will be able to apply what you've learned immediately
- ✓ You will learn from peers while building your network
- ✓ The blended format reduces the time you will need to spend away from work and family

HOW YOUR EMPLOYER BENEFITS

- ✓ Employees will only be away from the office for 21.5 days over two years
- ✓ The value delivered to the business will grow as your employee progresses through the program
- ✓ The employee will bring new ideas to the workplace
- ✓ Their perspective will change as they develop personally and professionally



THE HUB, THE WORLD'S MOST INNOVATIVE LEARNING PLATFORM

In the Part-time MBA you will have access to the world's most innovative online learning environment, the Hub. The Hub is the only online learning platform designed specifically for business education.

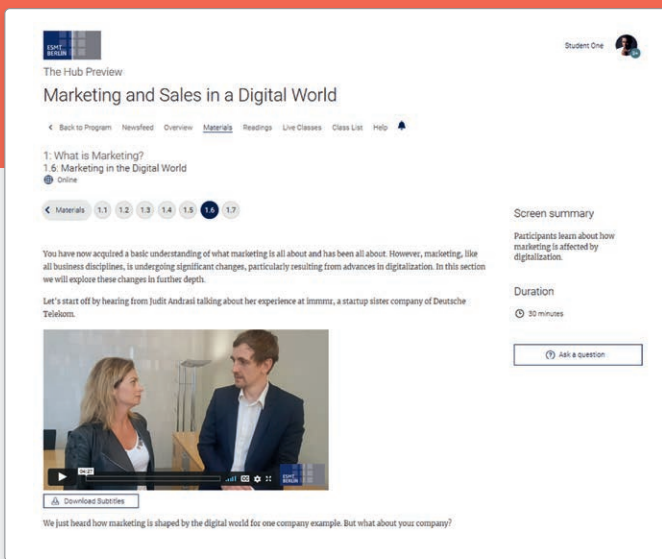
On the Hub you engage with faculty and peers through multiple interactive channels. The platform empowers you to track your progress, assess your achievement of learning outcomes, and interact with your peers on weekly topics.

Behind the scenes, the ESMT Educational Technology team works to ensure a seamless study experience. They liaise closely with professors and partners to stay up to date with the latest knowledge, learning models and techniques. This

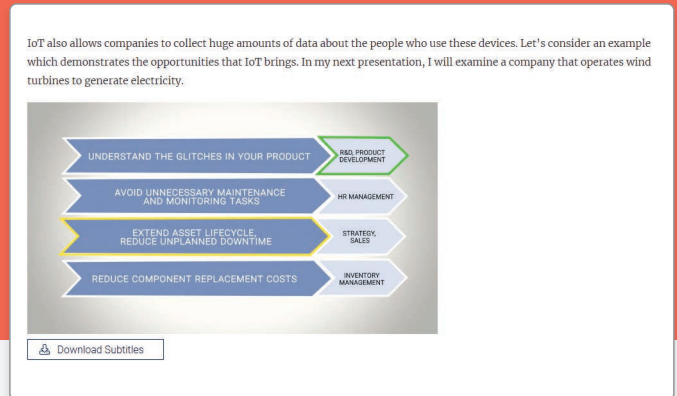
ensures we use the right technologies to deliver a high-quality and impactful educational experience

Experience life as a student on the Part-time MBA with our interactive Learning Hub demo.

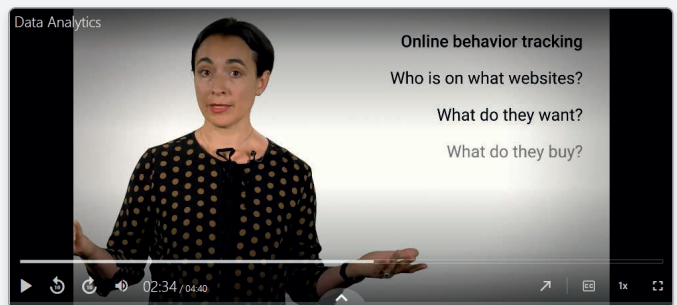
[ACCESS THE LEARNING HUB](#) 



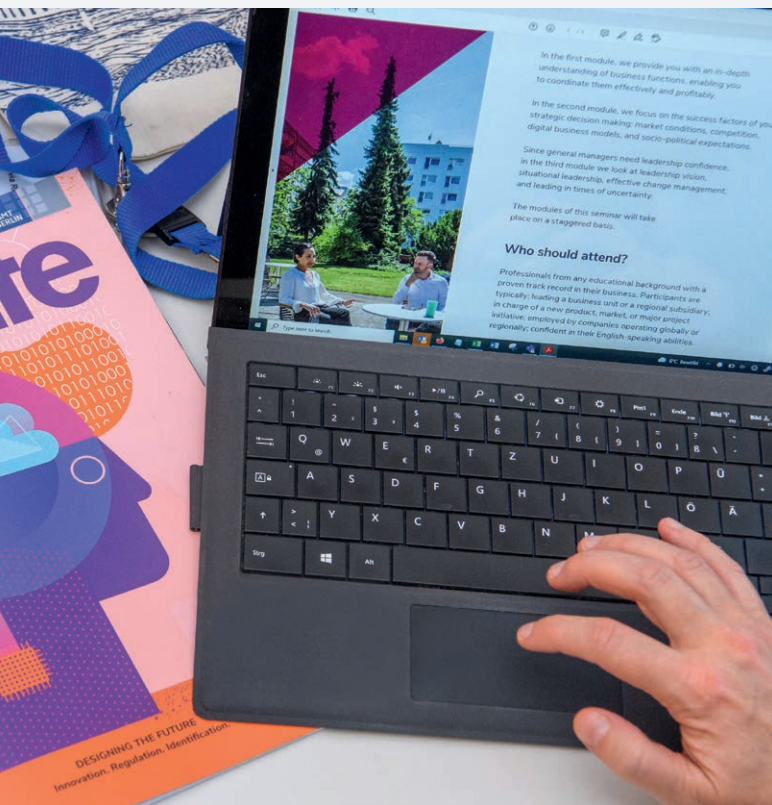
The Hub



The Hub



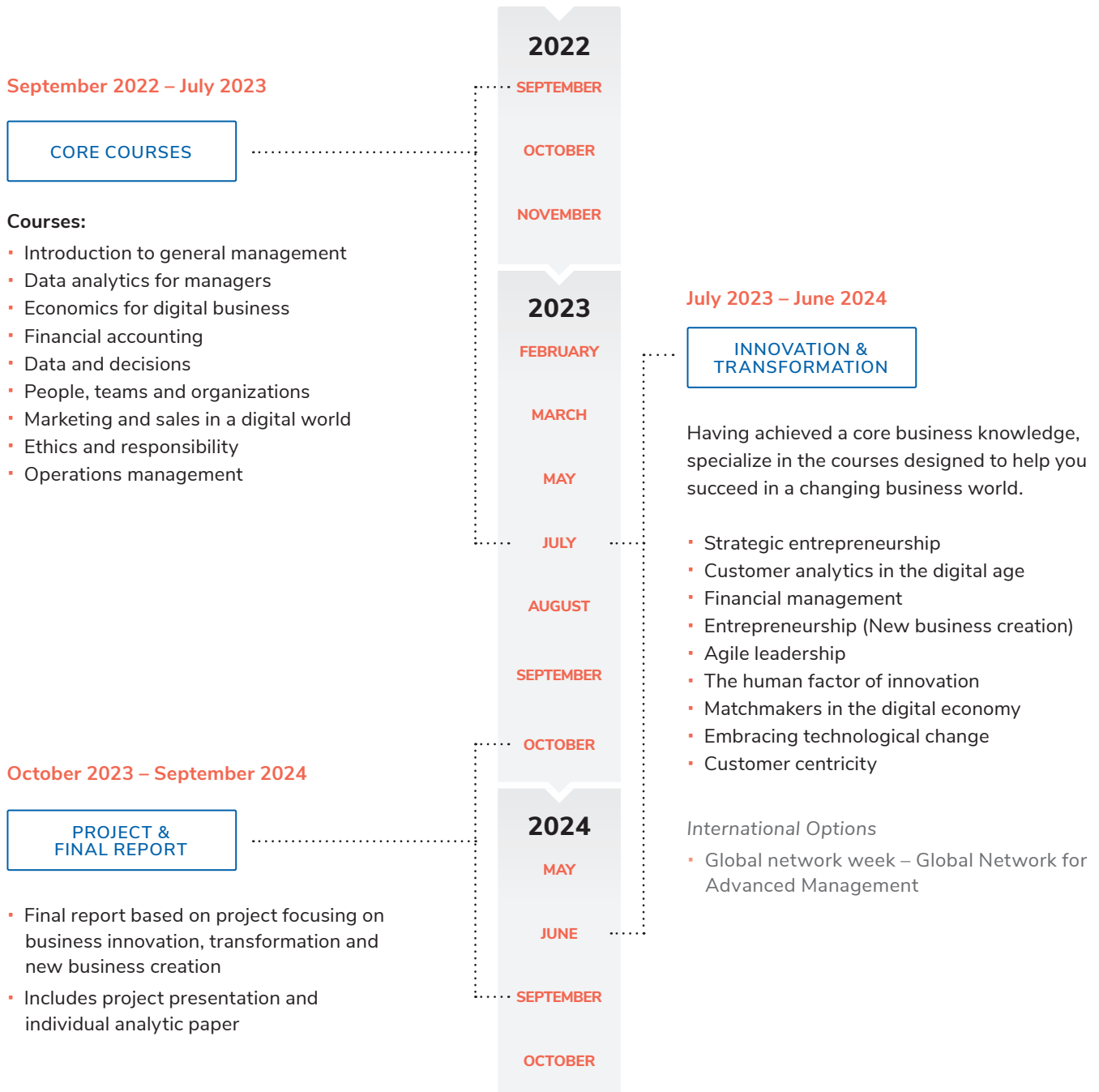
The Hub



YOUR STUDY EXPERIENCE

Expect to devote 15 hours per week to your studies. The interactive sessions, assignments, and projects are available any time on the Hub to fit into your schedule. ESMT's innovative course design means you can study at times which suit you. 80% of your learning is self-paced. Course materials including mini-lectures and interactive activities are built into all courses to allow studying at your own pace. All courses contain a mixture of group and independent study, and assessment takes place through a series of assignments and projects.

PART-TIME BLENDED MBA CURRICULUM AND TIMELINE



- Blended courses combine online and face-to-face learning in an ideal 75:25 split. You get the best of both worlds – innovative learning and network building.
 - 25% of your program takes place in person over 14 residencies. The program starts with a full week residency in Berlin for all students, and concludes with a 1-week international study tour. In between, you'll join 2.5 day residencies (Thursday lunchtime to Saturday evening) in your chosen location of Berlin or Munich. The classroom setting allows for discussion, network building and peer-to-peer learning while learning from ESMT's best-in-class faculty.
 - During residencies you will also take part in personal development courses on a range of topics such as building high performance teams, presentation effectiveness, intercultural communications, consulting skills, project management and more.
 - During the elective phase of the program, students can choose to take part in the [Global Network for Advanced Management Network Week](#)
- The curriculum is subject to change. For up-to-date information and course dates, visit our website.

FIND OUT MORE →

ADMISSIONS REQUIREMENTS



TO APPLY, YOU SHOULD HAVE:

- ✓ At least three years of postgraduate professional experience
- ✓ An undergraduate degree or equivalent qualification
- ✓ Strong performance in the GMAT, GRE, or ESMT admission tests
- ✓ English proficiency test scores, if applicable

We will also ask you for professional recommendations and a video essay.

DIVERSITY AND INCLUSION

ESMT Berlin encourages a conscious and serious effort from its students, staff, faculty, and administrators to prioritize the values and practices of diversity, equity, and inclusion within the school and to champion the same in academia and the business community.

[FIND OUT MORE](#)

KEY QUALITIES WE LOOK FOR IN APPLICANTS

- ✓ International outlook and intercultural competence
- ✓ A change and innovation mind-set
- ✓ The ambition and motivation to study part-time alongside your full-time work

If you have any questions or want to discuss your candidature, please contact the [Admissions team](#).

Early applications are encouraged as space in the class is limited. You may also qualify for an application scholarship.

[APPLICATION DEADLINES AND APPLICATION INFORMATION](#)

FEEES AND FINANCING

The tuition and fees for the Part-time MBA in Business Innovation are €38,000, and include access to the learning platform, all content, and required case study licenses. You will also receive a Smart Certificate that you can use to share your verified achievement with employers and on social media.

When you are accepted into the program, we will ask you to pay a non-refundable deposit of €4,000. The remaining tuition is payable over two instalments.

TAX DEDUCTIONS

In many countries, including Germany, tuition for higher education and related costs are tax deductible. For more

information, please visit the [tuition and fees page](#) and consult your tax advisor.

SCHOLARSHIPS

Two scholarships are available to early applicants:

- The Round 1 scholarship has a value of €8,500; all students submitting a completed application by the round 1 deadline will qualify
- The Round 2 scholarship has a value of €5,000; students submitting completed applications by the round 2 deadline will qualify

CAREER DEVELOPMENT

Throughout the program, the Career Services team is here to help your short- and long-term career development. For those seeking a new direction, career experts will help you improve your profile, you can network through company visits, and join a career fair on campus.

Irrespective of personal career goals, you have access to a robust professional network that can help you prepare for the next phase of your career. You will also have the opportunity to meet with potential employers and recruiters, and connect with business leaders from an array of different sectors. Networking is, and will be, a key element of your next career step, and Career Services is dedicated to connecting you with ESMT alumni in varied industries and sectors across the globe.

The on- and offline career services available to you as a part-time MBA student include:

- Face-to-face career counselling
- Hands-on workshops
- Career webinars
- Tools and resources through our Career Portal
- ESMT job platform
- ESMT alumni platform
- Networking events
- Annual Career Fair on campus in Berlin

PUT YOUR LEARNING INTO PRACTICE AT YOUR OWN COMPANY

The Part-time MBA final project report is an ideal way to apply your learning to a business situation experienced by your company. You can leverage the knowledge and skills of your classmates and faculty to help conduct a report focusing on business innovation and transformation.



JOIN THE ESMT COMMUNITY

All part-time MBA students are full members of the ESMT student body. You have full, unrestricted access to the ESMT campus in Berlin and all on-campus activities. Many of ESMT's speaker series and open events take place digitally but if they take place on campus you can choose to attend in person. All career events, alumni, club, and other extracurricular activities are open for part-time MBA students.

Choose between attending your Part-Time MBA Residencies on the ESMT Berlin campus, or our satellite location in central Munich.



"There are a lot of opportunities that will come to you during the course of the program, whether that would be events, external speakers coming in, clubs, small exchange opportunities with other universities. These are generally very interesting opportunities that you wouldn't get otherwise."

Chris Bell
Part-Time MBA Student
Class of 2020–2022
Senior Manager, Product Partnerships
and Alliances at Factor

ESMT BERLIN CAMPUS
IN THE CITY CENTER



ESMT CAMPUS
IN CENTRAL MUNICH



PART-TIME MBA 2021 CLASS PROFILE



47
STUDENTS



7
YEARS AVERAGE
WORK EXPERIENCE



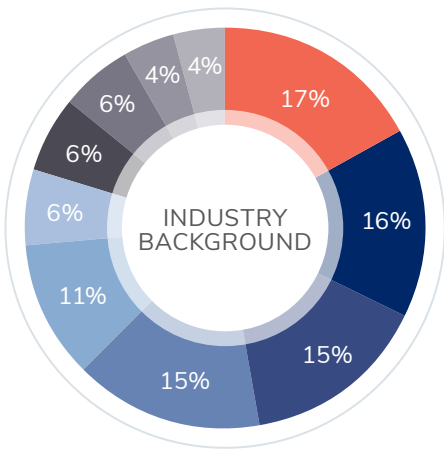
33
AVERAGE AGE



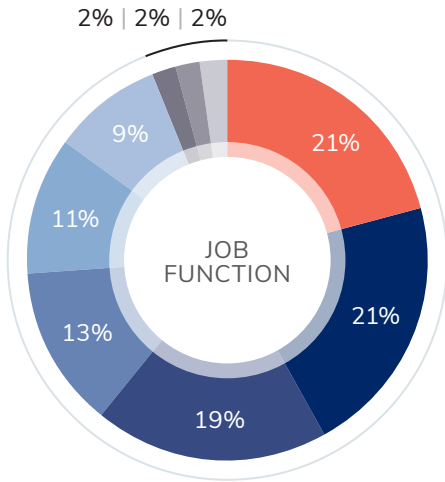
28%
WOMEN



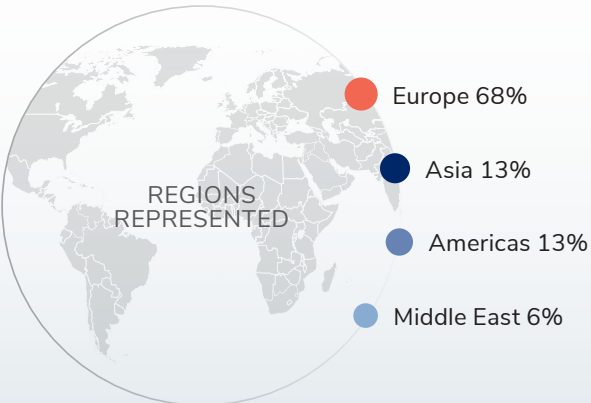
51%
INTERNATIONAL



- Manufacturing
- Consulting
- Technology
- Other
- Financial Services
- Transportation / Logistics
- Energy
- E-Commerce
- Media / Entertainment
- Healthcare



- Research / Development
- Marketing / Sales
- Consulting / Advisory
- Project Management
- Other
- Operations / Logistics
- Management Information Systems
- General Management
- Human Resources



24 NATIONALITIES

- | | | |
|---------|-----------|----------------|
| ALBANIA | INDIA | SERBIA |
| BELARUS | IRAN | SLOVAKIA |
| BRAZIL | ITALY | SOUTH AFRICA |
| CHINA | MACEDONIA | SPAIN |
| CROATIA | MEXICO | SWITZERLAND |
| ECUADOR | PAKISTAN | UKRAINE |
| FINLAND | POLAND | UNITED KINGDOM |
| GERMANY | PORTUGAL | UNITED STATES |

ABOUT US

ESMT Berlin is the highest ranked business school in Germany and top 10 in Europe.

Founded by 25 leading global companies, ESMT offers master's, MBA, and PhD programs, as well as executive education on its campus in Berlin, in locations around the world, online, and in online blended format.

Focusing on leadership, innovation, and analytics, its diverse faculty publishes outstanding research in top academic journals. Additionally, the international business school provides an interdisciplinary platform for discourse between politics, business, and academia.

ESMT is a non-profit private institution of higher education, accredited by AACSB, AMBA, EQUIS, and FIBAA, and is committed to diversity, equity, and inclusion across all its activities and communities.

www.esmt.berlin

CONTACT

ESMT
European School of Management and Technology GmbH

ESMT Berlin
Schlossplatz 1
10178 Berlin
Germany

Director of Admissions
Stephanie Kluth

Phone: +49 30 21231 1400

admissions.degrees@esmt.org

degrees.esmt.berlin/part-time-mba
apply.esmt.berlin



ESMT Berlin is accredited by:



ESMT Berlin is a member of:



Join us:



Founders and benefactors:

