



BUSINESS & MANAGEMENT

At IE University, we've streamlined our academic offering to help you find the program that's right for you. We give you the power to control your own journey according to your unique goals.

After selecting one of our program areas, you'll be in a better position to define your individual professional trajectory.

Guided by a world-class faculty and surrounded by other innovative minds, you'll have the freedom to explore as you discover your own career destination.

Every area offers a unique professional pathway. Start your journey today.



Discover all our program areas to help you continue your professional journey:

**Leadership
& Talent
Development**

[Know more →](#)

**Business &
Management**

[Know more →](#)

**Finance, Economics
& Trade**

[Know more →](#)

**Marketing,
Communication
& Sales**

[Know more →](#)

**Design &
Architecture**

[Know more →](#)

**Law, International
Affairs & Public
Policy**

[Know more →](#)

**Technology
& Data**

[Know more →](#)

ABOUT BUSINESS & MANAGEMENT

With outside forces testing companies, today's opportunity-rich business landscape is a complex space to navigate. These forces need to be considered as you make investments, implement technologies and strategies, and develop your products and services—while also promoting a positive workforce.



WHAT IS IT ALL ABOUT?

Our Business & Management programs are designed to help strategic business innovators face these challenges. Equipped with cutting-edge leadership skills, you'll be able to apply the latest technologies as you collaborate across a company, eliminate information silos and optimize strategic decision-making.

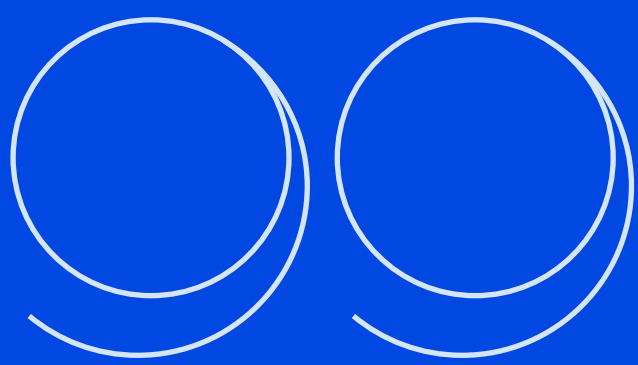
Immersed in the heart of your company's action, you will recognize failures and challenges as opportunities for growth—building the agile mindset needed to evolve and adapt to meet changing requirements. As a manager, you'll also need to have top soft skills that inspire people as you challenge the status quo. Combined with well-honed entrepreneurial abilities, this will allow you to push yourself and your team to create new opportunities and develop better solutions.

If you're ready to define the shape of the evolving business landscape as an inspirational leader, then Business & Management is the area for you.



WHO ARE THE PROGRAMS FOR?

“IE University provides its students with the ambition to become future leaders.”



**Juan Gómez-Lechón Pechuán,
Spain**

Bachelor in Business
Administration

Business & Management programs are for ambitious visionaries looking to challenge conventional business wisdom by thinking in creative and strategic ways. Grounded in your belief that innovation and entrepreneurship are a vehicle for improving society as a whole, you are motivated to create impact both within and outside of your organization. In short, these programs have been designed for the futurists and thought-leaders who will shape the next generation of business and management.





WHY CHOOSE THIS AREA OF STUDY?

01

Build a global network.

Every aspect of the program is designed to build and strengthen your global network of change-makers. Your immediate network will be made up of fellow program participants, with whom you'll share challenges and successes as your journey progresses, forging life-long friendships—or even potential business partners. This highly charged mix of innovative minds is further enhanced and guided by your network of professors who captain the ship, introducing you to key industry players and helping you navigate the rough waters of the modern marketplace.

02

Master business and tech skills.

At the heart of our programs is a curriculum centered on business management, strategy, economics and finance, alongside a strong focus on tech and innovation. This ensures you are equipped with the knowledge, tools and lasting growth strategies to succeed in the current landscape, actively applying case studies and real-life business examples from the very beginning.

03

Transformational leadership.

Business & Management is defined by a forward-looking, human approach to business development. While it is vital for future-proof businesses to maintain a digital outlook, fostering human creativity and boosting performance requires people-oriented leadership. Rooted in critical thinking, our Business & Management programs hone a managerial skill set. Combined with learned digital competencies and industry insights, you'll develop the transformational leadership skills to drive lasting impact in today's VUCA context.



04

Benefit from our Business School Advisory Board.

This program area features the Business School Advisory Board. Drawn from top international companies, members provide firsthand insights into current trends, employer demands, and how to get the most out of the program. Members of the board also give eye-opening talks, while providing mentoring and networking opportunities, careers advice, corporate visits and internships.



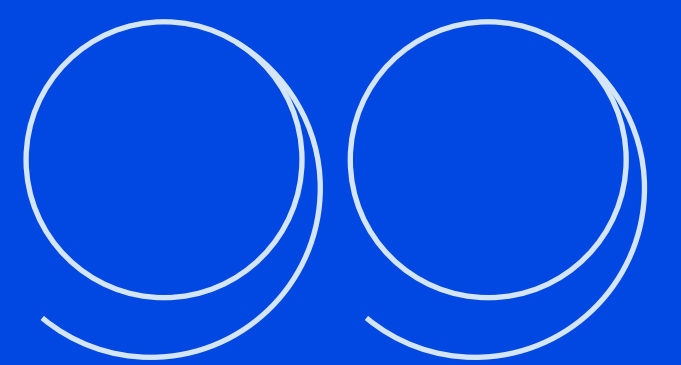
05

Experience an environment of entrepreneurship.

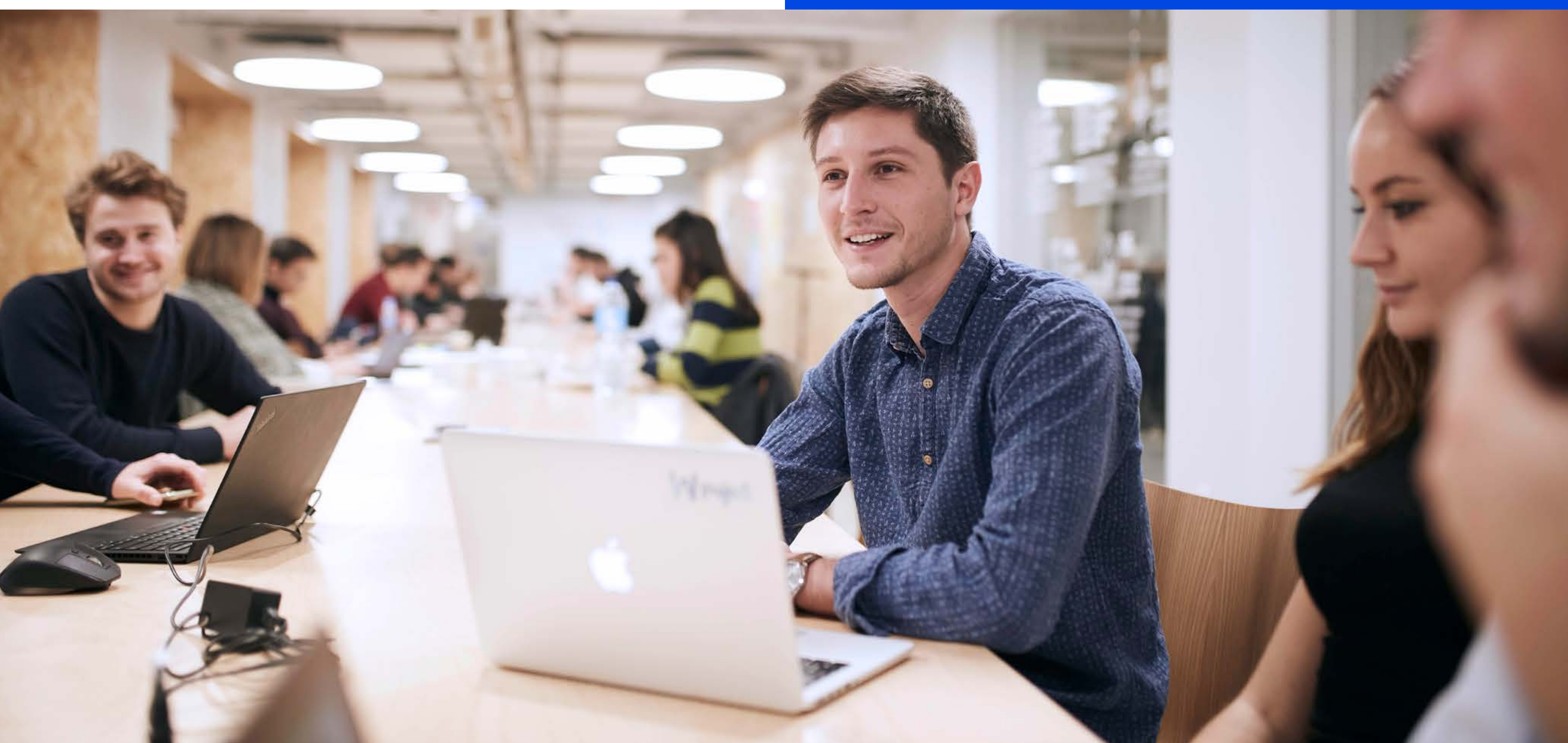
Established in 1973 by entrepreneurs, for entrepreneurs, our campus is an epicenter of innovation and acts as an incubator for bright ideas. This is where you have the space and resources to be bold, make mistakes and grow. Our world-class entrepreneurial facilities are complemented by expert coaching and mentoring, which helps breathe life into over 50 new companies on campus each year—such as Focus On Women, Evergreen Solutions and Letmepark, among others. In fact, after leaving our programs, over a quarter of our alumni go on to pursue careers as entrepreneurs.

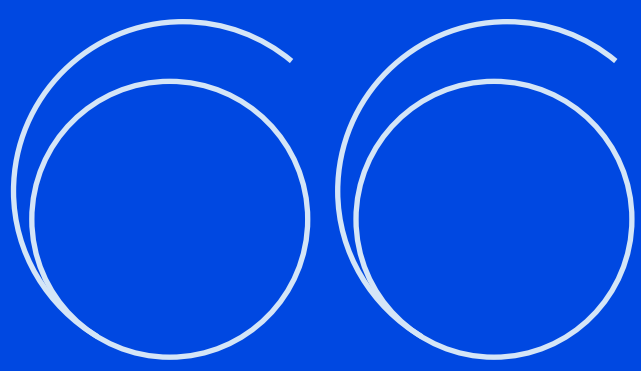


“For me, this program has been a wholly transformational experience, challenging me both personally and professionally.”



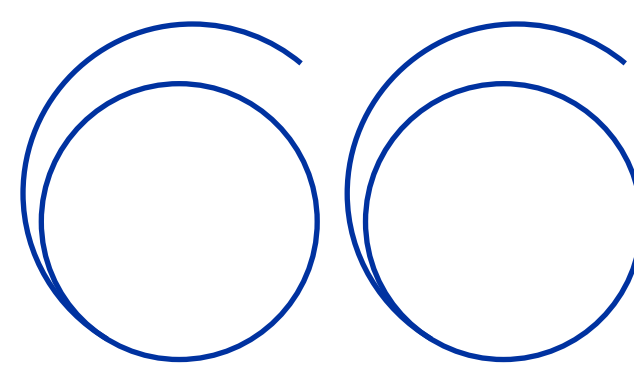
Alejandro Rebolledo, Venezuela
Master in Management





I wanted a top-tier global business school with the best possible Blended program, and a program that builds on international exchange at its heart.”

Joachim Von Goetz, Germany
Executive MBA



I was drawn to the IE Business School Global Online MBA for the opportunity to continue my career and advance my education at a well-reputed program that followed the case method.”

Florence Williams,
US & Great Britain
Global Online MBA



OUR PROGRAMS BACHELOR'S + DUAL DEGREES

Bachelor in Business Administration

[Know more →](#)

The Bachelor in Business Administration (AACSB, AMBA and EQUIS accredited) prepares ambitious individuals for international success. Whether starting an entrepreneurial venture or becoming a leader in a multinational, our world-class faculty and learning environment will help you reach your goals.

Bachelor in Data and Business Analytics

[Know more →](#)

Designed for individuals with strong analytical and critical-thinking tendencies, the Bachelor in Data and Business Analytics provides high-potential students with the tools of impact. Discover a hands-on program that deals with the most innovative technologies to unlock the power of data.

Bachelor in Economics

[Know more →](#)

This challenging undergraduate program centers on economic subjects, including econometrics, political science, applied analytics, behavioral science and technology. Students gain the perspectives necessary to understand today's globalized context, and the economic literacy to drive transformation.



BACHELOR'S DUAL DEGREES

We seek to provide you with the most comprehensive educational experience that allows you to explore your passions and tailor your own journey. In line with this, we offer Business & Management students the opportunity to take part in special dual degree programs:

Dual Degree in Business Administration + International Relations

[Know more →](#)

Dual Degree in Business Administration + Laws

[Know more →](#)

Dual Degree in Business Administration + Data & Business Analytics

[Know more →](#)

Dual Degree in Economics + International Relations

[Know more →](#)

Dual Degree in Business Administration + Design

[Know more →](#)

Discover our Dual Degree options and gain complementary skill sets.

[Find out more →](#)



OUR PROGRAMS MASTER'S + DUAL DEGREES

Master in Management

[Know more →](#)

The Master in Management* is a highly customizable program that provides next-gen leadership training for an ambitious mix of like-minded students. This program allows you to choose from six different tracks and over 50 electives to help you tailor your journey, and define your own career path.

*The Master in Management can be combined with other programs in a dual degree format.

Master in Finance

[Know more →](#)

This customizable program concentrates on the most important aspects of the current financial situation, including emerging tech. Through an exploration of investment banking, corporate finance and private equity—while also gaining insights into the realities of modern markets—you will graduate with a broad understanding of today's financial context.

Master in Applied Economics

[Know more →](#)

The Master in Applied Economics is a robust, hands-on program that empowers economics professionals to confront today's most pressing challenges. Through the program's three specialized tracks, you can choose to learn about driving change within corporations, building a better future through social economics, or providing expert consultancy services.

Master in Business Analytics and Big Data

[Know more →](#)

A hands-on program that addresses the shortage of data specialists in a business culture where data is king. Available in a part-time and full-time format, the Master in Business Analytics and Big Data explores the intricacies of data analysis through projects, multimedia simulations and classes led by industry experts from Amazon, Google and IBM. Master the in-demand data science skills across a wide variety of companies.

Master in Digital Business and Innovation

[Know more →](#)

This program provides the skills to build a career in digital transformation. By diving into key disciplines such as programming and data structures, it explores the latest disruptive technologies including AI and blockchain, alongside real-world projects with corporate partners.

Master in Real Estate Development

[Know more →](#)

The Master in Real Estate Development provides the skills and insights to help define our urban future. Rooted in finance, this one-year program explores the relationship between real estate and city development to gain a profound understanding of the development process and its future implications.

Global Master in Real Estate Development

[Know more →](#)

This flexible blended degree covers residential and commercial land use, offices, hospitality and the case study logistics through the lens of sustainability. Featuring financial concepts such as investment and real estate management, you will gain the skills to define tomorrow's urban landscape.

Master in Business for Architecture and Design

[Know more →](#)

The Master in Business for Architecture and Design is chiefly concerned with the role design plays in business decision-making. Following a practical approach, you will solidify your managerial and advanced design skills to succeed in the architecture, engineering and construction industry (AEC).

MASTER'S DUAL DEGREES

The insights gained in this area can be put to use in a wide variety of contexts. When combined with specific sector know-how, they arm ambitious individuals with a unique, high-impact skill set to stay ahead of the competition. For this reason, this area offers a number of dual degrees:

Dual Degree Master in Management + Master in Finance

[Know more →](#)

Discover our Dual Degree options and gain complementary skill sets.

[Find out more →](#)

Dual Degree Master in Management + Master in Digital Business & Innovation

[Know more →](#)

OUR PROGRAMS MBAs + DUAL DEGREES



International MBA

The International MBA* is a transformational program for top professionals, with at least three years of working experience, looking to take their business skills to the next level. As you expand your network, you will improve your leadership skills and gain the innovation toolkit to drive disruption.

[Know more →](#)

*The International MBA can be combined with other programs in a dual degree format.

Global Online MBA

[Know more →](#)

The Global Online MBA is a world-ranked part-time program that takes place over 17 or 24 months to provide business leaders with an in-depth exploration of new business developments. This flexible learning experience features the possibility of choosing your electives depending on your specific goals.

Tech MBA

[Know more →](#)

As the first specialized tech-focused MBA in Europe, the Tech MBA inspires professionals to drive the technology revolution. This experiential learning journey will provide you with the skills to manage innovation across departments. Learn to lead innovation from tech industry leaders.

MBA DUAL DEGREES

The insights gained in this area can be put to use in a wide variety of contexts. When combined with specific sector know-how, they arm ambitious individuals with a unique, high-impact skill set to stay ahead of the competition. For this reason, this area offers a number of dual degrees:

Dual Degree International MBA + Master in Finance

[Know more →](#)

Dual Degree International MBA + Master in Digital Business & Innovation

[Know more →](#)

Discover our Dual Degree options and gain complementary skill sets.

[Find out more →](#)

EXECUTIVE MBAs



Executive MBA

Enhance your potential as a high-impact professional with this program for established industry experts and top change-makers. The unique part-time format can be experienced in English, Spanish or a combination of languages to provide the necessary skills, insights and global perspectives to make a lasting impact.

[Know more →](#)

In-person Executive MBA

The In-person Spanish Executive MBA is a 10-month journey that takes you on a unique, highly transformative educational experience. Immersed in an innovative learning ecosystem, this highly practical Spanish-language program provides the skills and training to succeed in today's fast-paced landscape.

[Know more →](#)

Global Executive MBA

The program provides the digital toolkit to disrupt traditional business models. This part-time program brings together like-minded trendsetters from around the world who are changing the shape of businesses. Benefit from a combination of interactive online learning and face-to-face sessions in business hubs around the world to gain the skills of transformation.

[Know more →](#)

IE Brown Executive MBA

Over 15 months, the IE Brown Executive MBA brings together two educational powerhouses to empower impactful leaders as they become innovative and informed decision-makers. Featuring online and in-person lessons, the network-building program will help you break down industry silos to drive innovation.

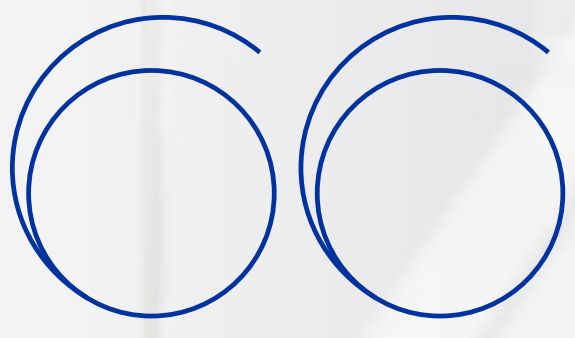
[Know more →](#)

OTHER EXECUTIVE PROGRAMS

To stay on top, impactful professionals need cutting-edge skill sets. Our highly specialized executive programs provide transformational leaders with the tools and global connections to overcome current and future challenges.

[Know more →](#)





**Be sure to open
your mind,
because we need
multidisciplinary
approaches
and skills to solve
big challenges.”**

Nadim Choucair, Lebanon-Canada
International MBA



TRENDS, CAREERS & JOBS

Taking part in any of our
innovative Business &
Management programs
will provide you with a
number of door-opening
opportunities and
possibilities.



Global B2C
ecommerce sales are
expected to reach
\$4.5 trillion by 2021.

HubSpot

63%

of millennials say their
**leadership skills
are not being fully
developed.**

Sylvester

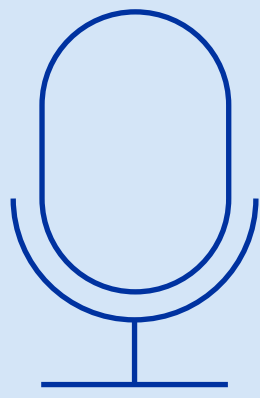
58%

of managers say
they **didn't receive
any management
training.**

MDA Training

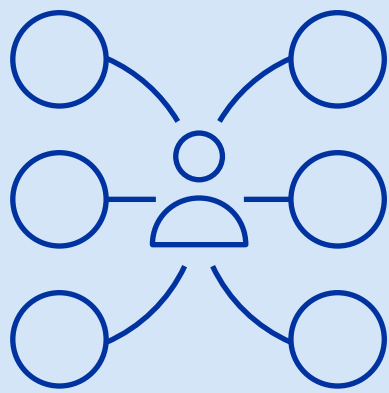
Future career roles include:

- Data scientist
- Business analyst
- Tech industry
- Financial Services
- Consulting
- Pharma
- FMCG / Luxury / Retail
- International Development
- Industrial/Energy
- Real Estate / Architecture and Design
- Communications and Media
- Transportation
- Tourism
- Ecommerce



OC&C estimates that **\$40 billion in the US and \$5 billion in the UK** will be spent through voice commerce by 2022.
HubSpot

37% of managers believe that the most important aspect of their role is **to keep the team on track to achieve goals.**
PWC



The biggest challenge managers face as people leaders is **juggling managing their team with their other responsibilities.**
Soap Box



INDUSTRY TRENDS



Remote Working

A reported 85% of millennials are in favor of remote working full time. In the wake of the COVID-19 pandemic, this is becoming a reality for an increasing number of people. While it can reduce company overheads and boost employee morale, this trend presents a challenge for managers when it comes to retaining a cohesive workforce, boosting productivity and maintaining a distinct company culture. Overcoming these challenges requires new mindsets and managerial best practices to embrace changing nature of the new normal in a way that is beneficial to all.

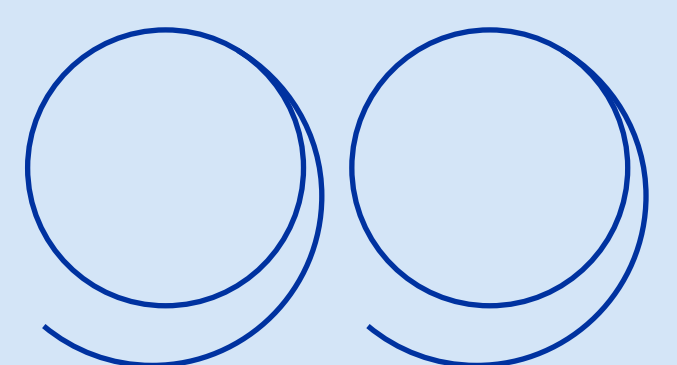
Corporate Social Responsibility

Companies are increasingly expected to take a political stance and demonstrate the values that they claim to believe in. Not only are brands in a powerful position to promote diversity and sustainability, but it can have a positive effect on bottom line results. This new context calls for business leaders who are authentic and possess a diverse skill set, able to combine business performance with social responsibility. IE University is leading the way in this regard, thanks to its annual sustainability aims and 10-year objectives, alongside a whole host of student-led clubs and organizations.

AI and technology

Year after year, there continues to be a cross-sector push for a more tech-focused, data-based approach to business. As disruptive technology is still widespread among organizations and companies, the opportunities for a new type of business leader are growing. Individuals

“By empowering me with a wealth of knowledge, the program has given me a versatile skill set and powerful tools that help me navigate the music industry. I feel more confident.



Lauren Henderson,
United States
IE-Brown Executive MBA

who are able to effectively navigate this environment with well-developed tech and data skills alongside managerial best practices are in high demand.

Next-gen tech

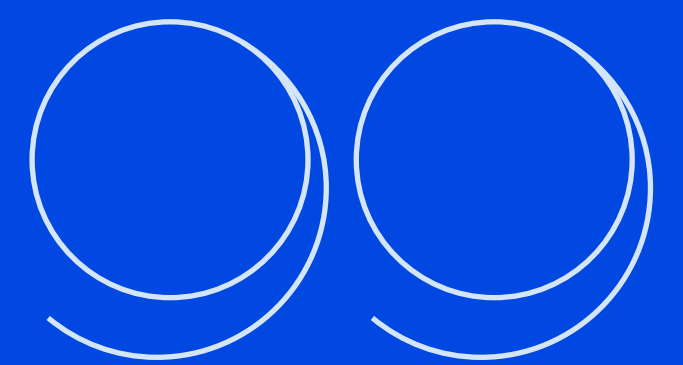
Amazon is now delivering products by drone. Self-driving tractor-trailers will soon be commonplace on our highways. Face-detecting systems now authorize payments, provide access to facilities, and track down criminals. Previously unthinkable tech advances are taking place every day, blurring the lines between reality and what we once believed to be science fiction. As this shows no signs of slowing down, there are plenty of opportunities to develop new, groundbreaking technology.

Data science

Data science is currently one of the fastest-growing sectors. In 2020, Glassdoor named the role of Data Scientist as the third most desired job in the United States. With over 6,500 positions available, a median base salary of \$107,801, and a job satisfaction rate of 4.0, it's not difficult to see why. Now is the time to hone your ability to identify, collect, analyze, interpret, and transform data to drive business value.



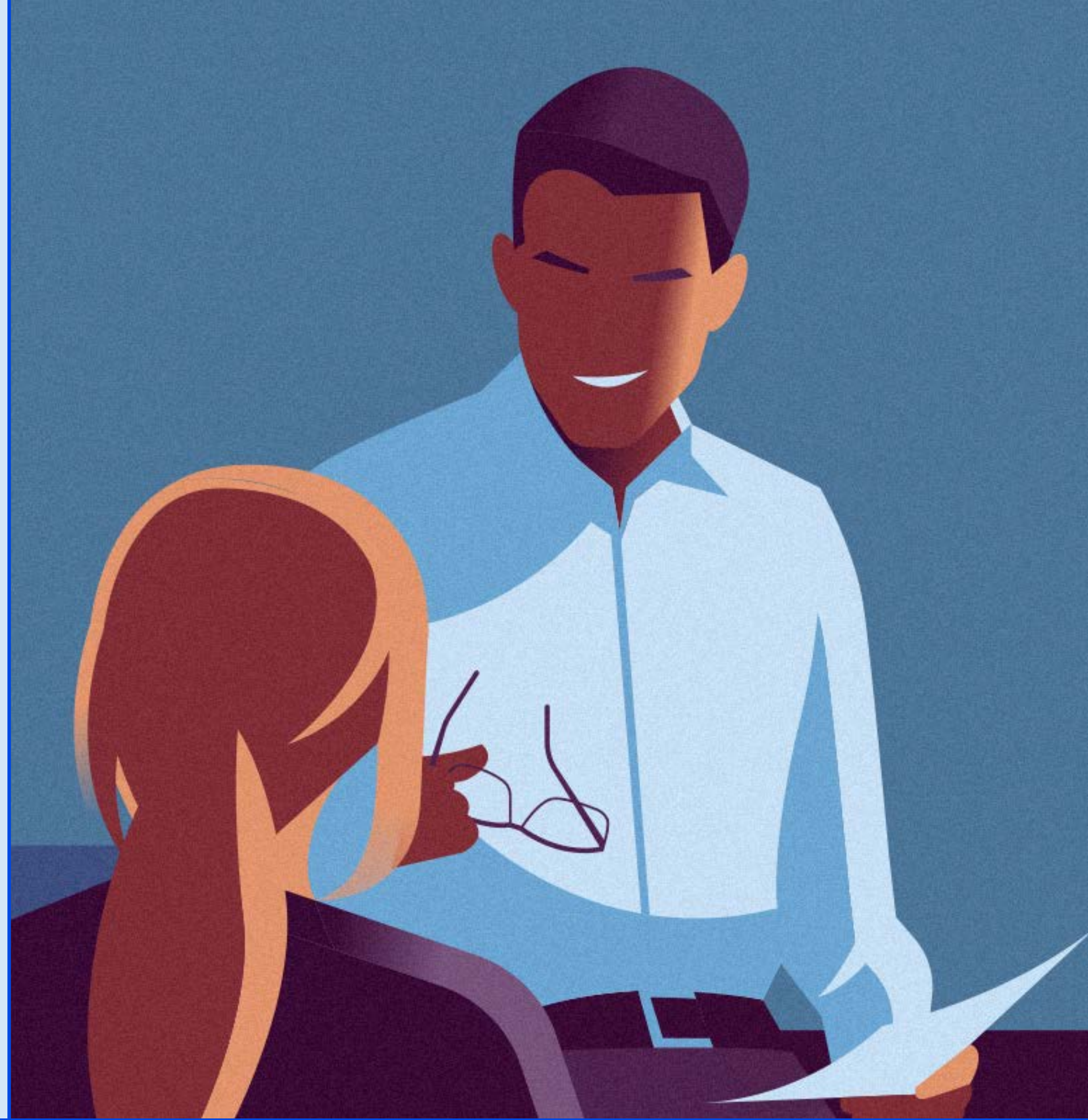
“My career interest has always been to work in industries that have a direct impact on the environment and are focused on sustainability.”



Siddhartha Suryadevara,
United Arab Emirates
International MBA



INSIGHTS



Kriti Jain

IE Business School
Professor of Human
Resources and
Organizational
Behavior

**Article published
in IE University**

[Read more →](#)

LEADING IN COMPLEX TIME

The Soft Power of Compassionate Management

Times of pressure make clear the importance of practicing compassionate management, writes Professor Kriti Jain. She offers three lessons based on pandemic related experiences for how leaders can thrive by combining purpose with empathy.

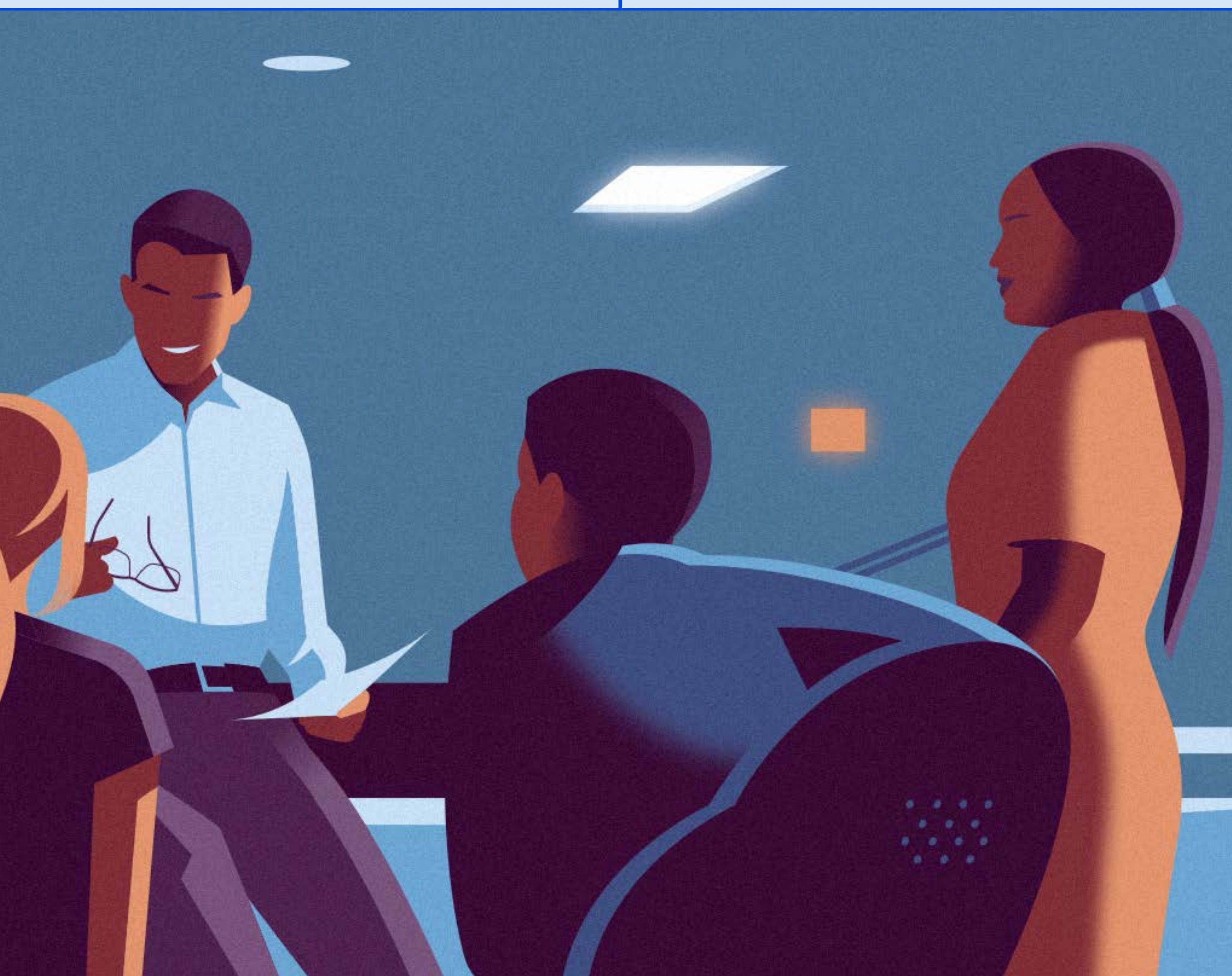
—

The dry business logic of balance sheets, profits, and shareholder value does not typically include concepts such as kindness, caring, and compassion. In fact, the general consensus is that companies must be ruthless when it comes to cost-cutting and layoffs, HR departments should be rule-bound, and managers authoritative and commanding.

If you've been a leader – be it of a small group or a big organization – you know well the feelings of insecurity that can underlie the armor of “bossiness.” Internally, you have likely thought, at one time or another: Are people going to listen to what I say? Are they thinking well of me? What if my friendliness is misinterpreted as a sign of weakness and leniency? Thought-patterns like this can be further exacerbated in some cultures, especially in Asia and Africa, where the leadership ladder is enmeshed with seniority and hierarchy.

Even the kindest of people can find themselves operating in ‘survival mode’ under the pressure of competition. Excessive rivalry competition between peers can lead to unethical conduct as well as sabotaging others. A conceived threat to one's job, increased workload, and tight deadlines can induce short-termism, which in turn kicks off our primal instincts of self-preservation at all costs.

It is in times of pressure – such as now – when compassionate leadership becomes even more important. Jeff Weiner, Executive Chairman of LinkedIn, is one of the foremost proponents of this when he says that businesses need empathy + action. Employees and customers are carefully watching every move that leaders make, and respond accordingly.



Employees and customers are carefully watching every move that leaders make, and respond accordingly.

MORE INSIGHTS

Step up and build trust

— Insights

Certain events undermine all the assumptions under which companies and individuals operate. In this interview, Sumit Virmani, Chief Marketing Officer at Infosys, highlights the importance of being adaptable, contending with uncertainty, building trust, and adopting a helpful attitude towards the customer. Now is the time for companies to step up.

[Read more →](#)

Branding in the time of Covid-19

— IE University

How is the current COVID-19 pandemic affecting the world of brand marketing and communications? Here are our top three ideas to address from a branding perspective.

[Read more →](#)

Another Kind of Resilience

— IE University

Resilience can determine whether an individual, organization, or market will decline, stabilize, or flourish during and after a crisis. But what, exactly, is resilience?

[Read more →](#)

Take for instance, a student of mine named Robert, who told me recently:

“I have always enjoyed the fast growth of the firm where I work. But during this period of COVID, I saw that the main priority of the firm remains shareholder value maximization. I feel my company doesn’t deserve my loyalty and dedication. I am going to change my job soon.”

Leading with compassion can seem like a paradox to executives. Many leaders I work with assume that compassionate management means they must also accept a certain level of mediocrity. For example, imagine if an employee is dealing with some problems at home and thus isn’t able to perform at his or her best in office. Until when should you, as a manager, be considerate and accept the lowered performance?

However, this doesn’t need to be an either-or question. Leaders can cultivate an organizational culture that celebrates both excellence and compassion together. The key ingredient is Purpose.

Organizations that lack a clear and articulated purpose and are also devoid of compassion often have a culture of apathy: no one cares about anything or anybody. It’s a sinking ship. A clear purpose brings focus and direction, but without the ‘we’ mindset and solidarity, this can quickly become a cut-throat, vulture culture. Employees notice quickly, as my student Robert did, when they find themselves in a company culture with this mismatch between what is said and what is practiced. Likewise, a lack of purpose compounded by too much compassion leads to rudderless mediocrity: everyone is stagnant and complacent.

In order to thrive, leaders must combine purpose and compassion. I offer three lessons from recent pandemic-related experiences:

Give people freedom

One significant change from the pandemic, which seems here to stay, is an increase in working from home. But, along with it often comes micromanaging as the old systems that allowed leaders to develop trust in their employees are no longer relevant. Companies are now measuring productivity through analytics based



Leaders can cultivate an organizational culture that celebrates both excellence and compassion together. The key ingredient is Purpose.

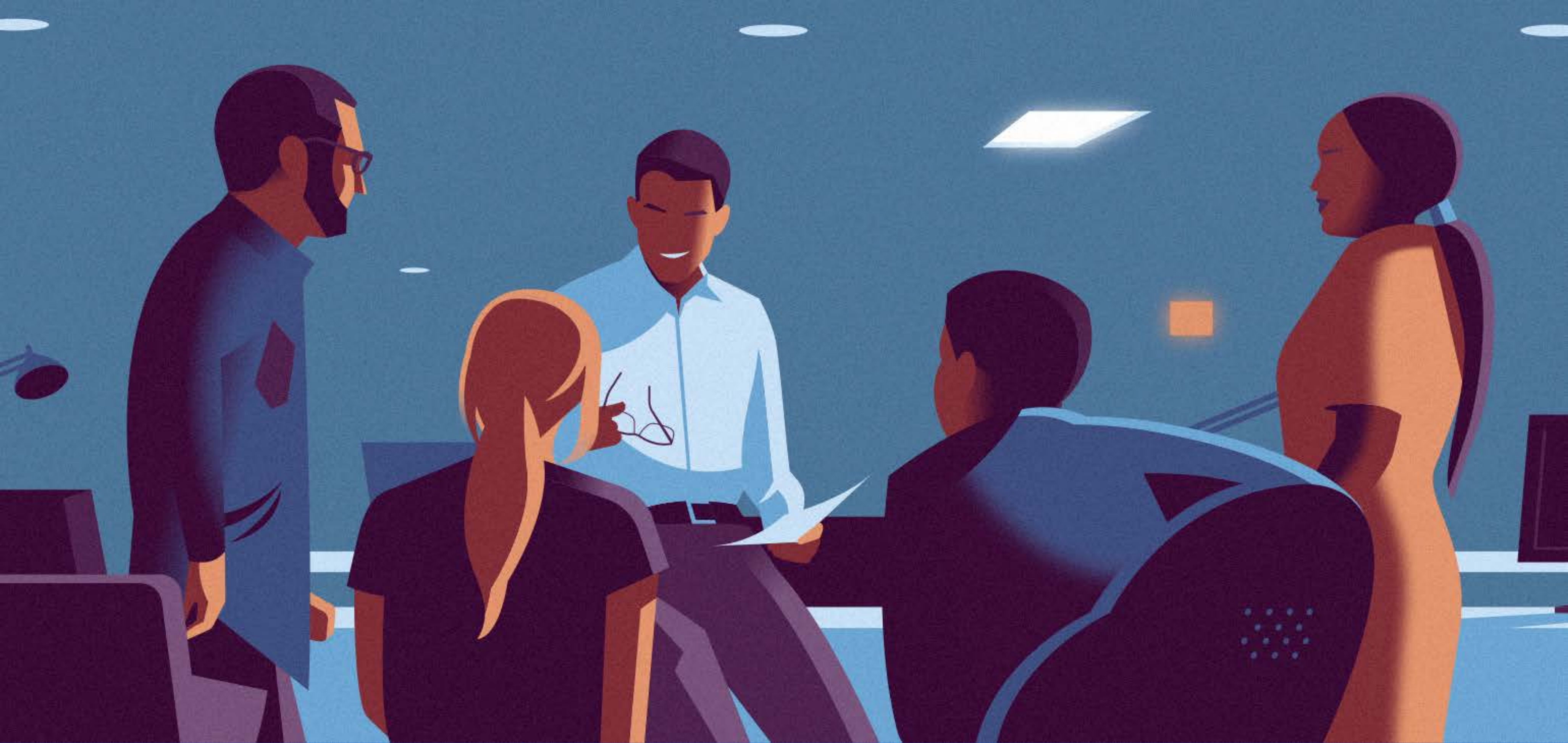
on number of emails sent, meetings attended, and calendar events. This intensely data-driven view does not do justice to the employees. Managers must trust workers enough to give them the freedom to decide ‘where’, ‘when’, and ‘how’ they do their activities. The leader’s role is to provide the ‘why’.

Create feedback and work rituals

Managers sometimes equate giving workers freedom and autonomy with absolving themselves of managerial responsibility. As one employee told me, “I love my independence but it has had an unintended adverse effect on the level of feedback and support provided by my manager.” And particularly in the current pandemic environment, work-from-home policies can exacerbate this issue. Managers should schedule regular check-ins with employees or organize virtual coffee breaks or TGIFs. Rituals like these are a low-cost solution that effectively maintain the rhythm and connectedness of a team. But it’s also important to make sure that these do not become just another item on the checklist.

Identify social impact

An employee working for more than a decade in an airline cargo division told me that he felt that he didn’t do work that had impact on society and the world at large. This feeling became more intense during the pandemic. He said, “one of the inerasable thoughts was: am I going to die without doing any good to the world?” However, he sensed a difference in himself and his fellow workers when the company transported animals, medicines, or relief materials. He focused on working with the



A clear purpose brings focus and direction, but without the ‘we’ mindset and solidarity, this can quickly become a cut-throat, vulture culture.

company to identify ways to tell the story of these products – by whom and for whom – and began to see his role in “delivering hope,” not just boxes.

Building purpose-driven organizations doesn’t have to entail fancy language about social impact, climate change, and sustainability on the company website. Leaders can build small everyday practices into employee activities in order to cultivate a sense of meaning and purpose. Leading with compassion is not only about improving the health and well-being and pay of employees in exchange for increased loyalty and dedication. It is about re-building the confidence in each other. Our society has long been broken. It is time to be more human and more humane.

UNCOVERIE

Dive into the IE University experience with Uncover IE —a publication that explores everything from student life to the future of your industry.

[Read more →](#)

IE University showcases its first ever hybrid venture day in Madrid

— IE University

With over 120 participants, 14 finalists, and 17 semifinalists, the record-breaking event marked the first time a Venture Day was held both face-to-face and online.

[Read more →](#)

6 things to consider before starting a business

— Driving Innovation

We’ve made a list of the six things you should think about before you start your journey.

[Read more →](#)

ADMISSIONS PROCESS & FINANCIAL AID

The IE University admissions process is simple yet rigorous—and carried out entirely online.

While the particulars may change depending on your chosen program, it always follows a similar format, which you can discover below. With our rolling admissions process, there's no application deadline. But spaces are limited so we recommend that you apply as soon as possible.

The first steps

Before you embark on your personal learning journey, there are five preliminary steps you need to take.

Who you are

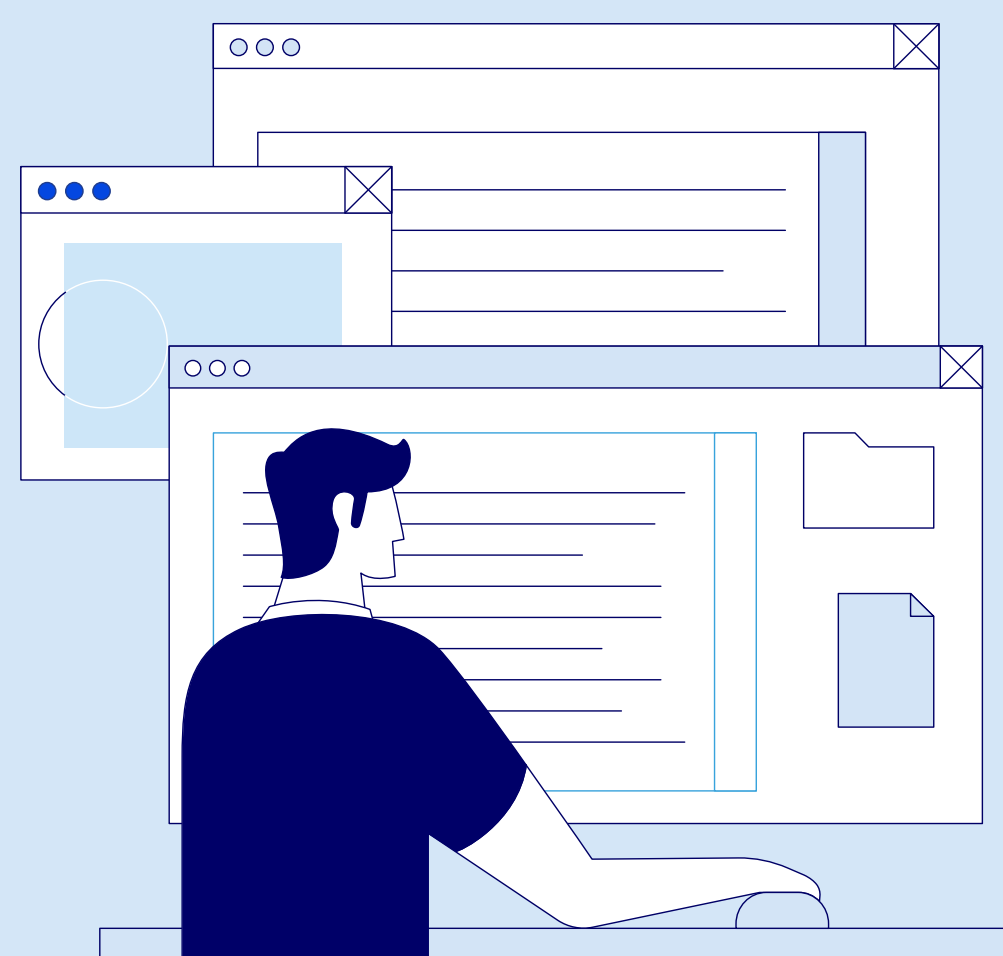
Students across all program areas share common traits that we look out for. We particularly value dedicated and talented individuals who come from diverse backgrounds and possess a global mindset.

Alongside your strong interpersonal skills and innovative outlook, you thrive under an intensive academic workload, considering it an opportunity to share new experiences and create unique approaches to problem-solving.

01

Online Application Form

Complete the online application form and upload the documents required by your program.



02

Online Assessment

With the application submitted and the fee paid, you will receive a link to answer three live questions, two in video format and one in written format.



03

Entrance Exam

Next, you will have to take either the GMAT, GRE or IEGAT. If you would like to apply to a Finance Program you could also take the CFA or CAIA.



04

English Proficiency

TOEFL, IELTS, Duolingo or Cambridge (C1 or C2) certifications may be necessary to demonstrate your English level.



05

Personal Interview

This online interview will take place with an associate director of the admissions team.



06

Final Decision

Your entire application will be evaluated by the Admissions Committee and you will receive an answer within 1–3 weeks.



This process may vary depending on the program. Be sure to consult the Admissions area of your program of interest for more details on the admissions process.

* Special admission requirements for Master in Finance Part-time candidates, contact the admissions team for more information.

[Get started →](#)

FINANCIAL AID



If sorting out funding and scholarships is an important part of making IE University your next big step in your professional journey, the good news is that we have a range of funding options available to support you!

Most of our students rely on a combination of different types of financial means to cover the tuition fees and the overall costs associated with program attendance. These means typically include personal resources, student loans, scholarships and, at times, some form of family support or tuition assistance from employers.

The IE Financial Aid Office will help you understand the different financing options and scholarship opportunities available. Researching, understanding your options and planning ahead is key. The FAO will provide you with all the necessary guidance to make any scholarship or loan application process as smooth as possible.

Please visit our financial aid website for more details or schedule an appointment with our team.

[Go to the Site →](#)

The aim is twofold: celebrating and rewarding outstanding individuals and providing scholarship support to deserving and promising candidates who would otherwise not be able to attend IE University.

IE Scholarships

Thanks to the IE Foundation and the generosity of our students, alumni, parents, corporate partners and other benefactors who support our groundbreaking Financial Aid program, we are able to maintain a strong commitment to providing top-notch education to highly qualified candidates from around the world, regardless of their economic situation. Our wide portfolio of scholarships allows us to guarantee diversity and excellence through our needs-based and merit-based scholarships.

Scholarships are awarded based on economic need, merit, distinctive competencies and/or academic and professional excellence. The aim is twofold: celebrating and rewarding outstanding individuals and providing scholarship support to deserving and promising candidates who would otherwise not be able to attend IE University.

Check the [IE Financial Aid website](#) to discover the full list of scholarships available and to learn more about the application process.



Direct Awards

There is no formal application process for the IE High Potential Award—all applicants are automatically considered. Awards are communicated at the time of admission and recipients are chosen based on the information provided during the admissions process: the strength of their application, academic merit, professional experience, the quality of the interview, competitiveness, life experiences and suitability to the program and our school. These awards are need-blind, and are compatible with other IE Scholarships should the candidate require further support through a formal scholarship application.



Loans

Many of our students rely on loans—either government and/or privately funded—to at least partially finance their studies at IE University. As we strive to provide our students with further financing opportunities, we are committed to securing agreements with both Spanish and international institutions that offer our students financial loan schemes on favorable grounds. While there are many organizations that lend to IE students—including those we have an agreement with—it is critical that you understand all fees and terms of available loans to compare them and determine which are best suited to your particular needs.

Contact our dedicated team at loans@ie.edu to find out which financing options may be available to you. Please note that many financing schemes are time sensitive and may require planning several months before your program starts.

Tuition Payment Options

While making an investment in higher education is extremely worthwhile, we understand it isn't always easy. At IE University, we allow students to pay in interest-free installments, without pre-approval requirements or credit checks.

The number of installments and conditions depends on the program, please talk to your admissions advisor for more information.

ABOUT YOUR UNIVERSITY

The IE University ecosystem is designed with the student in mind. Rooted in a human-centered approach to entrepreneurship and innovation, we offer an extensive global network, cutting-edge facilities and top institutional partnerships—empowering future leaders to define their journey.



WHO WE ARE

**First and foremost,
we are Liquid Learners.**

**Liquid Learning
at IE University is the
culmination of our
educational vision,
transcending any single
platform or approach
to produce a holistic,
streamlined academic
experience.**

Developed over 20 years, this model blurs the lines between online and in-person education resulting in a flexible, highly interactive learning journey.

By breaking down traditional barriers to education, Liquid Learning provides access to the same world-class education, regardless of location or personal circumstances.

But what does this mean? Allow us to explain. As Liquid Learners, we are:

1,800+

students can attend
the same session
simultaneously

100%

of our students have
online access to classes

200

classes streaming
online simultaneously
in HD

100K+

online sessions
in total

Leaders in Business Education

IE University was founded by entrepreneurs with a vision to disrupt traditional models of education to equip students with the skills they need for the future.

To achieve this, the institution was created with five values in mind: diversity, humanities, technology & innovation, sustainability and entrepreneurship.

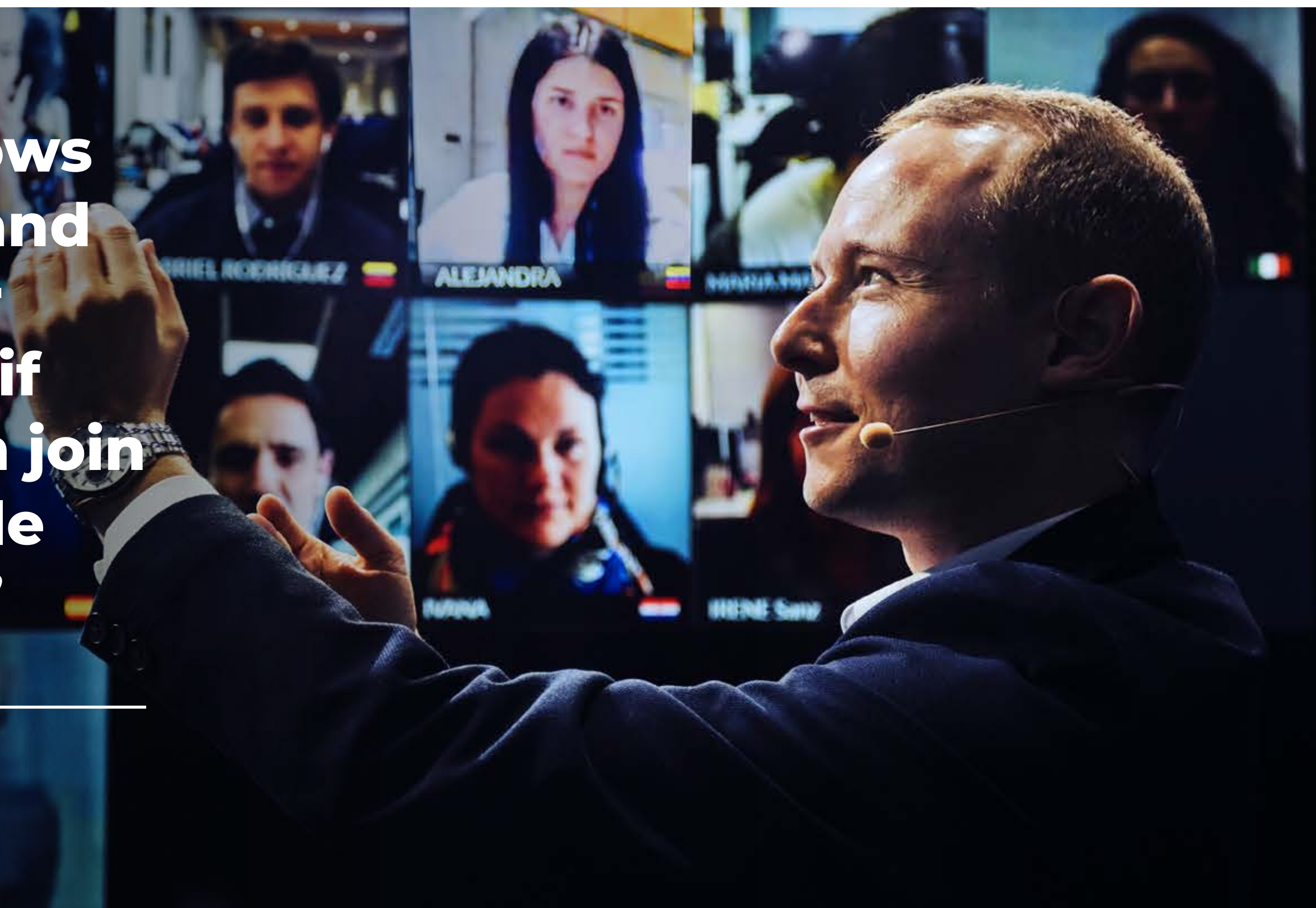
Pioneers in Disruptive Learning

IE University transformed business education by introducing disruptive teaching methodologies, ranging from immersive classroom approaches and technological innovation to close ties with industry leaders.

Over the years, our broad spectrum of disruptive learning innovations has helped students from 140 different countries unleash their true potential.

“The WOW Room allows students to connect and collaborate no matter where they are, even if the only way they can join is through their mobile phone at the airport.”

Jolanta Golanowska
Director of Learning Innovation at IE



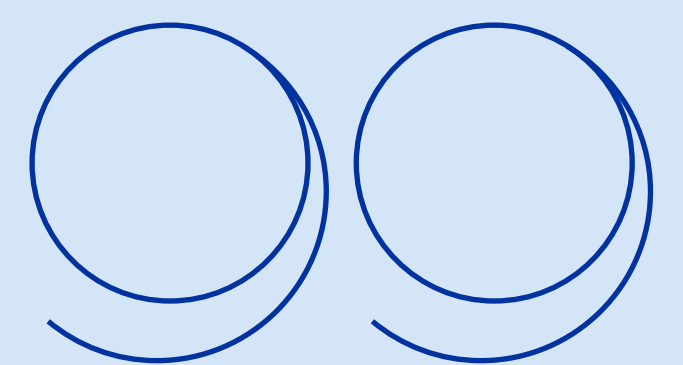
Diverse Visionaries

Our cutting-edge methodologies and global approach to education is complemented by the diversity of our community.

Students are in constant contact with a variety of academic, ethnic and cultural backgrounds, which challenges preconceived notions and empowers them to think in new, innovative ways.



“I'm able to study with people from all around the world and learn about different cultures.



Patricia
Master in Management



25%

of our alumni have
started their own
businesses

1,500+

students trained
in entrepreneurial
management

100+

mentors working
alongside our students

Restless Entrepreneurs

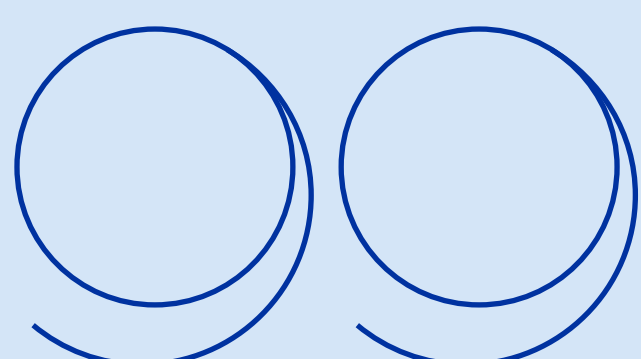
All our programs are taught from an entrepreneurial perspective, encouraging students to craft and apply solutions in the real world—whether in an intrapreneurial or entrepreneurial capacity.

Through startup accelerators and networking opportunities, students are able to fuel their ideas, fully supported as they embark on their entrepreneurial journey.





“IE University teaches you to work and cooperate with people from different backgrounds, and to bring out the best in others.



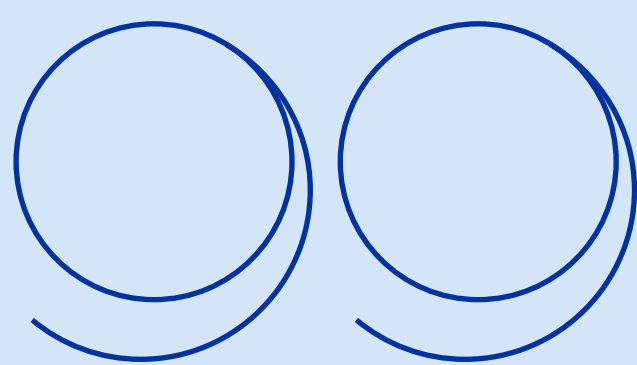
Dionysios Stavrakas, Russia
Executive MBA

WHERE WE ARE OUR EDUCATIONAL ECOSYSTEM

**Enjoy the right university experience for you.
We have three locations:
Segovia, Madrid and
Online.**



“In every corner of Segovia, in every step you take through its streets, squares, and countryside, there’s a sense of tradition, art, and history.



Cheyenne Uribe

Switzerland. Dual Degree in Laws and International Relations
Class of 2020

Segovia

[Know more →](#)

Declared a World Heritage Site by UNESCO in 1985, Segovia is famous for its cathedral, alcázar and aqueduct.

One of the city’s most historic buildings, the Convent of Santa Cruz la Real, is home to the IE University campus. This campus combines rich history with state-of-the-art classrooms.





Madrid

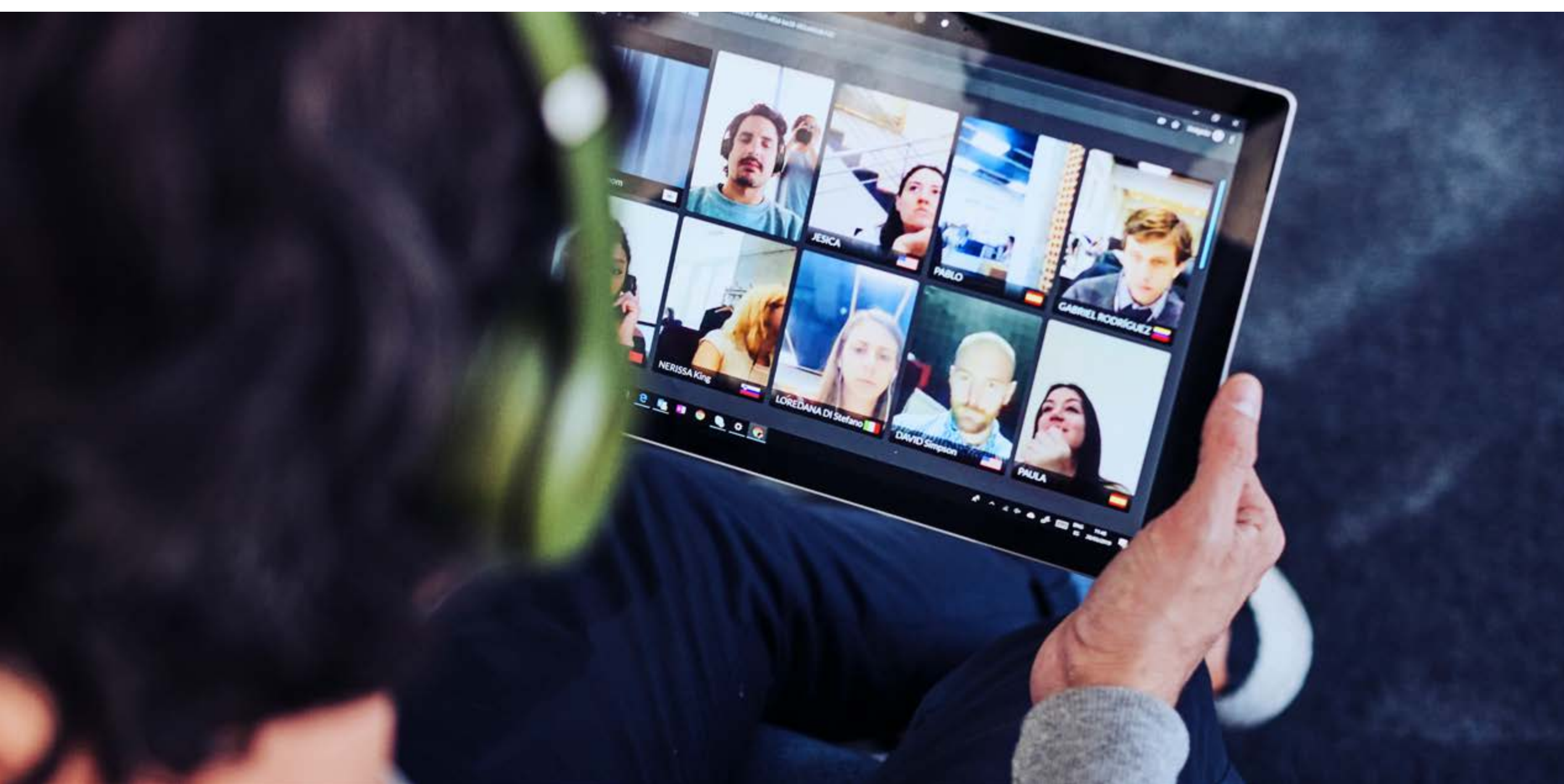
[Know more →](#)

Our urban tech-based education hub is located at the heart of one of the most exclusive neighborhoods of the city. Not far away, you can find our new innovation tower—the fifth addition to the Cuatro Torres—bringing an environmentally efficient and avant-garde architectural design to a lively business district.

Online

Our online classrooms enable us to provide Liquid Learning with hybrid teaching methodology.

Featuring synchronous and asynchronous learning, the online campus puts the student at the center with dynamic learning methodologies that adapt to individual circumstances.



The IE Tower in numbers

7,000

square meters set aside for
green spaces

180

meters high and 35 floors

6,000

undergraduate students on
campus

35

story tower with classrooms
and educational zones

70+

classrooms and a large
number of workspaces and
chill-out zones

50,000

square meters



66,000+

total alumni

169

countries

1,300+

alumni events worldwide

28

alumni reunions

6,000

participants

60+

career sessions per year

300+

career orientation
interviews

Global Presence

Our extended IE community stretches across the globe, with 30 offices working together to build a lasting community around the world.

These offices organize thousands of international networking events, connecting our alumni community, candidates, companies and partner universities.

Benefits for our global community:

- ▶ IE events, masterclasses and workshops led by IE professors
- ▶ Corporate partnerships
- ▶ Venture Days
- ▶ Networking and social events for alumni and students
- ▶ Global Alumni Weekends
- ▶ “Glocal” network
- ▶ Worldwide conferences
- ▶ Career opportunities for alumni and students
- ▶ Alumni clubs

Find us at one of our international offices.

[Know more →](#)

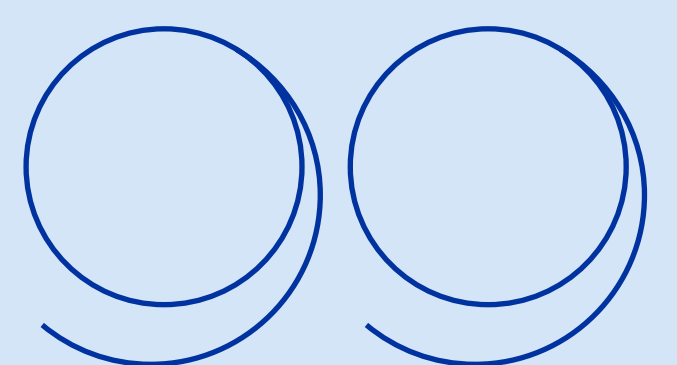


WHAT'S LIFE LIKE AT IE UNIVERSITY

There's always something happening at IE University. From business conferences to sports games and coding competitions, you'll never be lacking in opportunities for growth—and fun!



“IE University has provided me with the right network and environment to strengthen my professional potential as an entrepreneur and architect.



Dana Nayef Alfayez
Alum. Master in Business for
Architecture & Design



Venture Days

Event that connects the entrepreneurial community across all continents.

30+

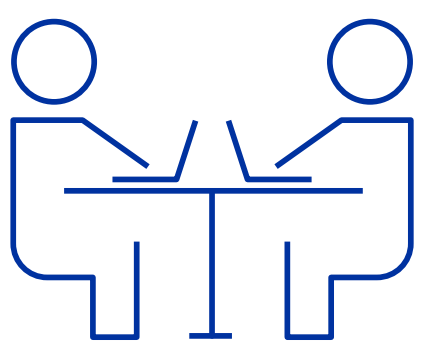
cities around the globe

1,000+

startups applied

Area 31

Weekly Venture Network event with pitches given to investors.



Exclusive workspace for admitted teams

100

events every year

[Know more →](#)

Venture Lab

Launchpad for startups under the guidance of industry experts.

10

finalists go to the Venture Day in Madrid

450+

startups participate each year



EnlightED

Bringing together the most innovative startups in education, innovation and edtech.



South Summit

Brings together the most innovative startups regardless their industry, development stage and country.



6,700+

CEO / Executives participated in our latest edition

\$4.3B+

raised by former startup competition finalists

IE Rockets

Residency program to build your skills and brand in the higher education sector.

146

startups applied

\$60M

raised from startups

IE Clubs and Centers

We believe that campus life is just as important as academic life. With more than 120 active student-led clubs on campus and online, our students have access to countless opportunities to engage with a variety of topics and learn beyond the classroom.

Club spotlights

IE Out & Allies Club

The IE Out & Allies Club endeavors to broaden understanding and support for LGBTQI* populations worldwide. This student-led LGBTQI* club organizes inclusive, year-round events, which range from educational meetups to networking and cocktail events to celebrate a break from school.

The club also proudly organizes the LGBT@Work, the longest-running LGBTQI* work conference in Europe, and third-largest business school LGBTQI* conference in the world.

Women at IE

At IE University, we strive to maintain and promote gender equality both on and off campus. With over 2,000 members, the IE Women in Business Club was created to reduce the obstacles facing women in gaining top leadership positions.

We also work with multiple international women’s organizations to provide talented and driven women the financial resources required to reach their academic and professional goals.

Every year, we celebrate International Women’s Day with a week full of events addressing gender equality.

Women at IE University
in numbers...

39%

of our full-time faculty
are women

48%

of our students are
women

56%

of the scholarships
offered to master’s
students are awarded
to women

7.7
million

was awarded to women
pursuing a master’s or
bachelor's degree in
2019



1,500+

annual face-to-face and
online events

600+

speakers hosted on campus

37,000+

attendees

IE Center for Diversity in Global Management

The IE Center for Diversity in Global Management harnesses the power of diversity to help organizations become more resilient, efficient and innovative.

Created in September 2002, the Center is an invaluable resource for the IE University community, engaging in training, applied research and awareness-raising activities, alongside holding networking events to foster international debate.

IE Africa Center

IE Africa Center aims to revolutionize the way the next generation of global executives understand African innovation—past and present.

We understand that the intellectual and physical contributions of Africa and its people are not only central to the modern world as it exists today, but are crucial to building a better future.

More IE student clubs:

- ▶ **Net Impact**
- ▶ **AI & Big Data**
- ▶ **TechIE**
- ▶ **IE Tech Lab**
- ▶ **IE Tech & Innovation**
- ▶ **IE Smart Cities**
- ▶ **IE Cybersecurity**
- ▶ **IE Blockchain**
- ▶ **IE Air & Space**
- ▶ **IE Fintech**
- ▶ **IE Coding**
- ▶ **IE Women
in Business**
- ▶ **IE E-Commerce**
- ▶ **IE EdTech**

and more...

[IE Centers →](#)

OUR STUDENTS
IN NUMBERS

85%

international students

160+

nationalities
on campus

45+

languages spoken
on campus

52%

male students

7,000+

students on campus

48%

female students

100+

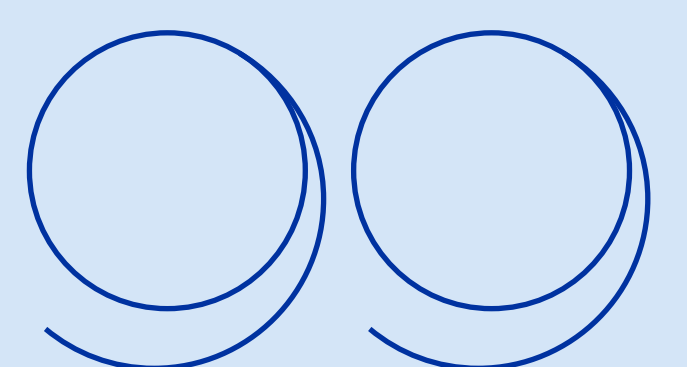
active clubs on campus



“I think the fact that there were only 20 of us and there are 17 different nationalities, the fact that we got to learn so much from different cultures, is great. I think I learned as much outside as inside the classroom.

Manon Germain

Alum. Master in Talent Development
& Human Resources



OUR RECOGNITION & REPUTATION

Pioneers in Online MBAs since 2001

1ST Worldwide
Distance
Online MBA

QS

2021

5TH Best MBA
Program
for Entrepre-
neurship

P&Q

2021

2ND Worldwide
Online MBA

Financial Times

2021

5TH Worldwide
Master in
Management

QS

2022

3RD Worldwide
Executive MBA

The Economist WhichMBA

2020

7TH Worldwide
Global MBA

QS

2022



WORLDWIDE ACCREDITATIONS



“I believe it is critical to understand cultural differences and to be able to work in a diverse environment, which is exactly what IE University provides for both its professors and students.

Bin Ma

Assistant Professor, Human Resources
& Organizational Behavior

