



## Interview with Ross Admissions

### Q. Do you have any advice for Israeli applicants considering applying to Michigan Ross?

A: Below are our recommendations for Israeli prospective students:

- **Include your military experience as a part of your career history:** we greatly value the skills, responsibilities and knowledge developed from your military service and the value that you would bring to the class.
- **Attend one of our [admissions events](#)** to learn more about the highly flexible MBA program at Ross, its inclusive culture and incredibly supportive community.
- **Michigan Ross has a strong Israeli network.** We recommend reaching out to our Israeli MBA students and recent grads. They are excited to speak with you and share more about their experiences!

Connect with: **Omer Sfadia '24** at [osfadia@umich.edu](mailto:osfadia@umich.edu) / Saar Joskovitch '23 at [saarjo@umich.edu](mailto:saarjo@umich.edu) / Ziv Zohar '23 at [zivz@umich.edu](mailto:zivz@umich.edu) / Orel Haim '23 at [orel@umich.edu](mailto:orel@umich.edu)

---

### Q: What kind of career support can I expect as an international student?

A: Our Career Development Office offers the support you need to get the job you want through a variety of personalized resources. Benefit from one-on-one academic advising before the program even begins, or get individual guidance from one of our 80+ peer career coaches. You'll also have access to internship assistance, recruiting preparation courses, and individualized career coaching. And, we offer Alumni Career Service support for life.

---

### Q: What are some of the top hiring companies, especially for Israeli or international students?

A: Our MBA graduates work in an array of industries, with 60% of the class going into Tech or Consulting. Others pursue healthcare, consumer packaged goods, financial services, operations, and other sectors. 95% of graduates are career switchers, and the median salary package is \$192K. The top hiring companies at Ross are McKinsey, Bain, Amazon, EY/Parthenon, Deloitte, Citi, Pepsico and Google. Ross Israeli MBA graduates have recently accepted post-MBA positions at Amazon, Facebook, McKinsey, Cisco, and Microsoft.



[Click here to view our Employment Stats](#)

---

**Q: What makes Michigan Ross unique?**

A: At Michigan Ross you get more [hands-on opportunities](#) to start, advise, lead, and invest in real businesses than at any other school. Through Ross' 2-year MBA program you will gain the experience recruiters want and hit the ground running in your post-MBA career.

In addition to a summer internship, students will also gain additional business experience for 7 weeks as part of their [MAP project](#), where students get the opportunity to work on consulting projects for major companies, make live real estate investments from a pool of student-run capital, or work on an entrepreneurial venture.

Another important factor to consider about Ross is its strong alumni network. Ross has more than 50,000 Ross alumni in 108 countries, in addition to the wider 600,000+ University of Michigan network that students also have access to.

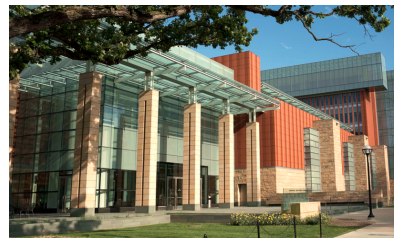
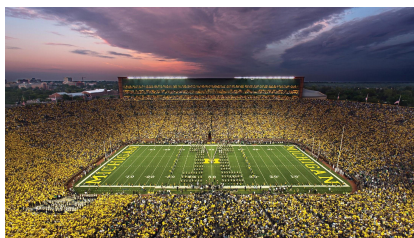
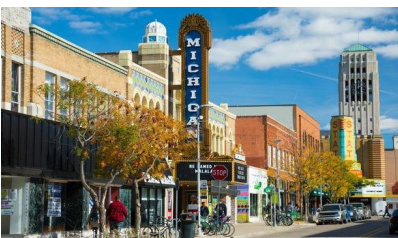
Learn more about the many other aspects that make the Michigan Ross Full-time program unique [here](#).

---

**Q: Can you share some details about the area the school is located in?**

A: With its vibrant downtown, a diverse mix of historical and cultural places, shopping, sports venues, water sports, arts festivals, great restaurants and beautiful natural areas and parks, Ann Arbor is frequently voted as [America's best college town](#).

Students love the variety Ann Arbor offers, with a vast range of options for dining, cafes, nightlife, and shopping. [Click here to Take a Virtual Campus Tour of Michigan Ross](#)



---

**Q: Can you tell us more about funding – scholarship/fellowship options in your school?**

A: When you apply to the Full-Time MBA program you're automatically considered for **merit-based scholarships**, and will be notified of any awards upon admission. No separate application is required. Awards are based on academic ability, professional and personal achievements, and potential to contribute to our community. Scholarships range from \$10,000 to full tuition. Learn more [here](#).

---

**Q: In which round should I apply? How important is it to apply in Round 1?**

A: We encourage you to apply in either Round 1 or 2, depending on when you are able to put together the strongest application. Your chances of admission and scholarship award will be similar in both rounds. Chances of admission and scholarship in round 3 vary from year to year.

---

**Q: What is the GPA requirement for applying to the Full-Time MBA Program?**

A: There is no minimum GPA requirement; we encourage you to apply to our program regardless of your GPA. Your GPA is only one factor we review in determining your eligibility and academic readiness for the MBA program. Please refer to our [class profile](#) for our current average GPA in the class.

---

**Q: How much work experience do I need before I can apply?**

A: We do not require a specific number of years of work experience prior to entering the Ross MBA program, but almost all incoming Ross students have worked for at least 2 years. The average Ross student enters the MBA program with 5 years of work experience.

That said, we evaluate work experience not in terms of quantity, but in terms of quality. We examine the impact you have had on your organization and the leadership qualities you have demonstrated. We consider the range of stories and experiences you will be able to share with our classmates. If you have limited work experience, you should demonstrate on your application why it is the right time to pursue an MBA, and what you will be able to contribute to the Ross community.